



# **NEW LIFE FURNITURE DESIGN COMPETITION**

AV Cabinet Final Presentation  
Julie Logan  
Harrington College of Design  
Mig & Tig and Mortise & Tenon

# *Contents*

• Final Design	3
• Design Inspiration	7
• Preliminary Sketches	9
• Elevations & Sections	15
• Materials	30
• Cut Sheets	32
• Designer	42
• Nouvelle Vie	44



# **FINAL DESIGN**

# Nouvelle Vie



Designer: Julie Logan (2008)

\* - Price includes quote from 100-year-old Chicago-based custom architectural woodworking company, including cabinet construction, TV lift, media centers and hardware from Hafele, as well as design services. The company requested confidentiality.

Inspired by Louis XVI, Gio Ponti, & Florence Knoll, Nouvelle Vie is horizontally linear with clean lines.

- Audio Visual Cabinet
- Innovative & Self-contained
  - TV housed within the cabinet
  - Remote-operated center TV lift
  - Pull-out audio-video centers for storage of 6 components with built-in cable management
  - Media storage
- Eco-Friendly Construction
  - Lyptus or Ashwood hardwood top & doors
  - Hardwood veneers & formaldehyde-free MDF construction for sides, back, bottom & interior
  - Brushed aluminum base & accents
- Price: \$5,000-\$5,500 \*

# *Nouvelle Vie*



*A sophisticated and elegant furniture piece complementing an upscale and contemporary living environment, allowing TV, components and media to be hidden, when not in use.*

Designer: Julie Logan (2008)

Mig & Tig  
Mortise & Tenon

New Life Furniture  
Design Competition

Julie Logan  
Harrington College of Design

# *Nouvelle Vie*



*Houses a user-friendly lift system, for remote access to the TV through an access panel in the top of the cabinet.*

Designer: Julie Logan (2008)



# **DESIGN INSPIRATION**

# Design Inspiration



Louis XVI Commode  
Jacques Manser  
William Word Fine  
Antiques



1930s Sideboard  
Gio Ponti  
Rago Arts and  
Auction Center



1961 Credenza  
Florence Knoll  
Source Book of  
Modern Furniture  
Habegger, Osman

## *Preliminary Conclusions*

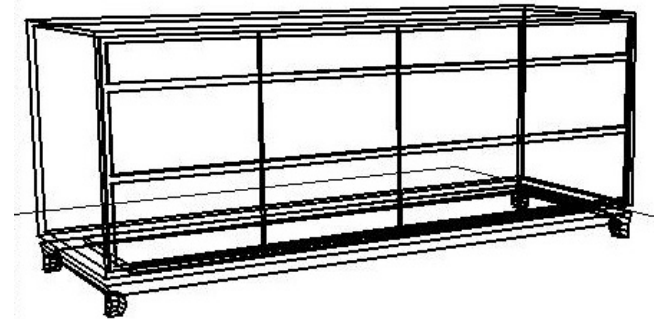
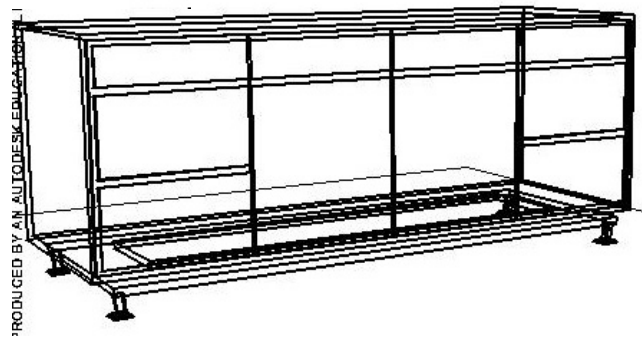
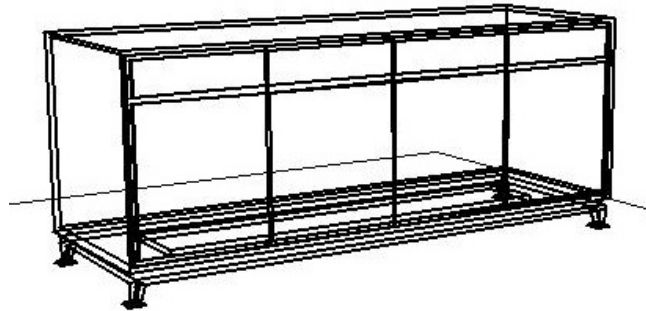
- ▣ Overall Design Elements
  - Streamlined
  - Horizontal
  - Potentially Asymmetrical
- ▣ Cabinet
  - Raised on exposed legs or suspended
  - Low grain wood, wood veneer, horizontal
  - Dark stain, low sheen
  - Metal reveals
- ▣ Legs
  - Exposed
  - Brushed Silver or Bronze
- ▣ Hardware – little or none





# SKETCHES

# Preliminary Sketches - Exterior

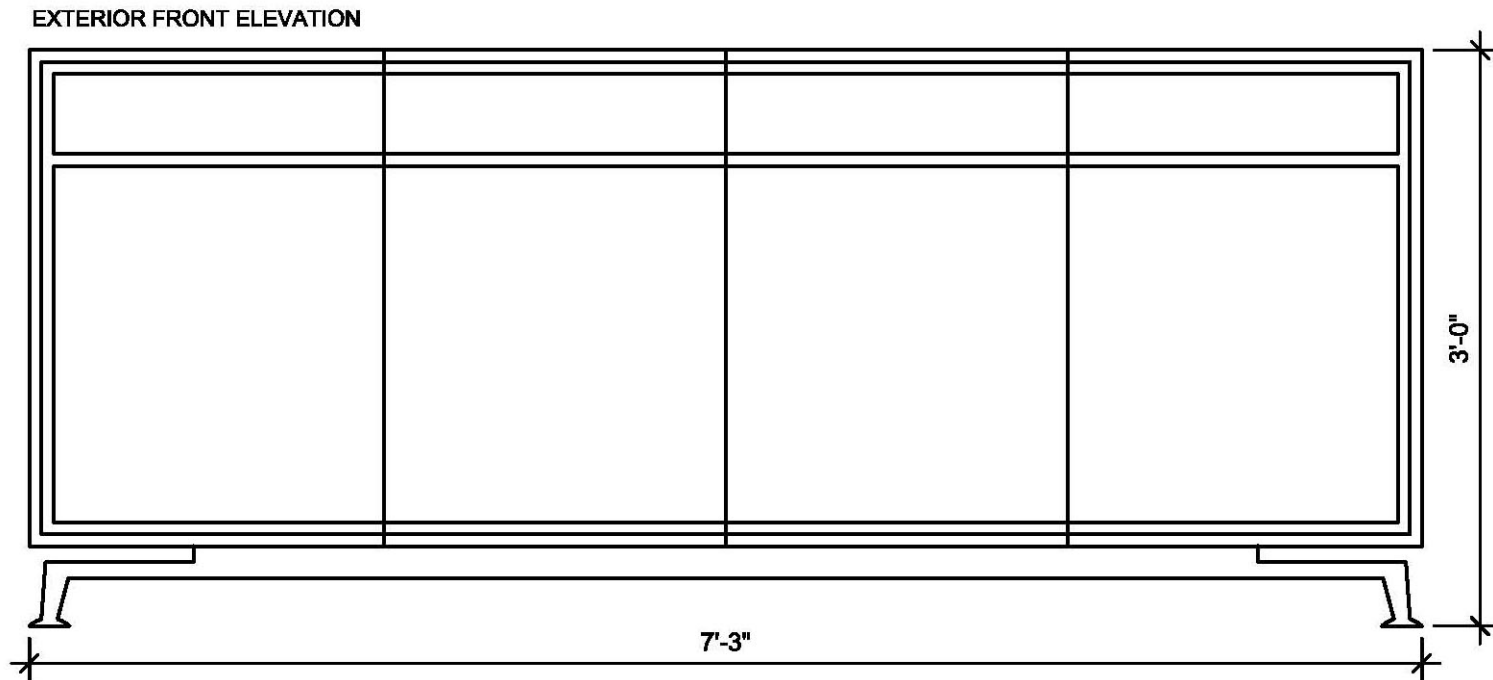


Mig & Tig  
Mortise & Tenon

New Life Furniture  
Design Competition

Julie Logan  
Harrington College of Design

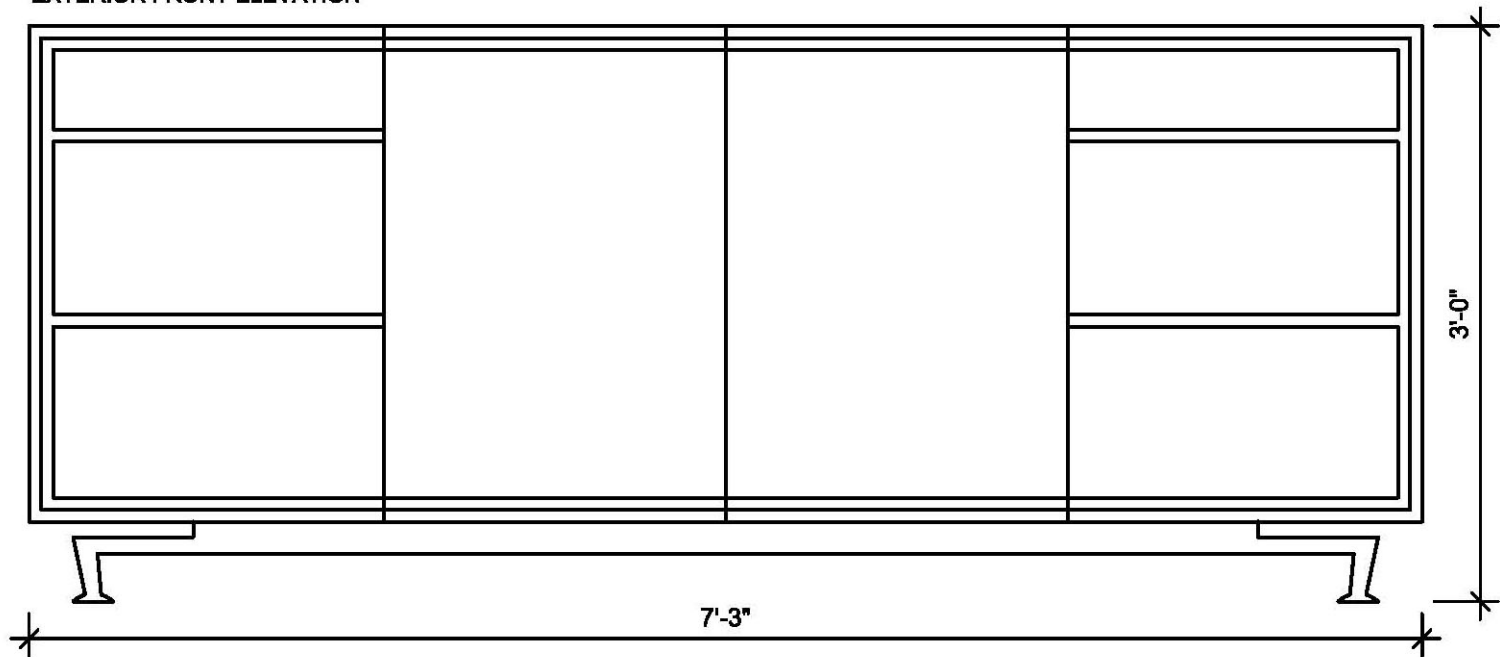
# Preliminary Sketch - Exterior



**1** AV CABINET FRONT EXTERIOR ELEVATION SKETCH VERSION 1  
SCALE 1" = 1'-0"

# Preliminary Sketch - Exterior

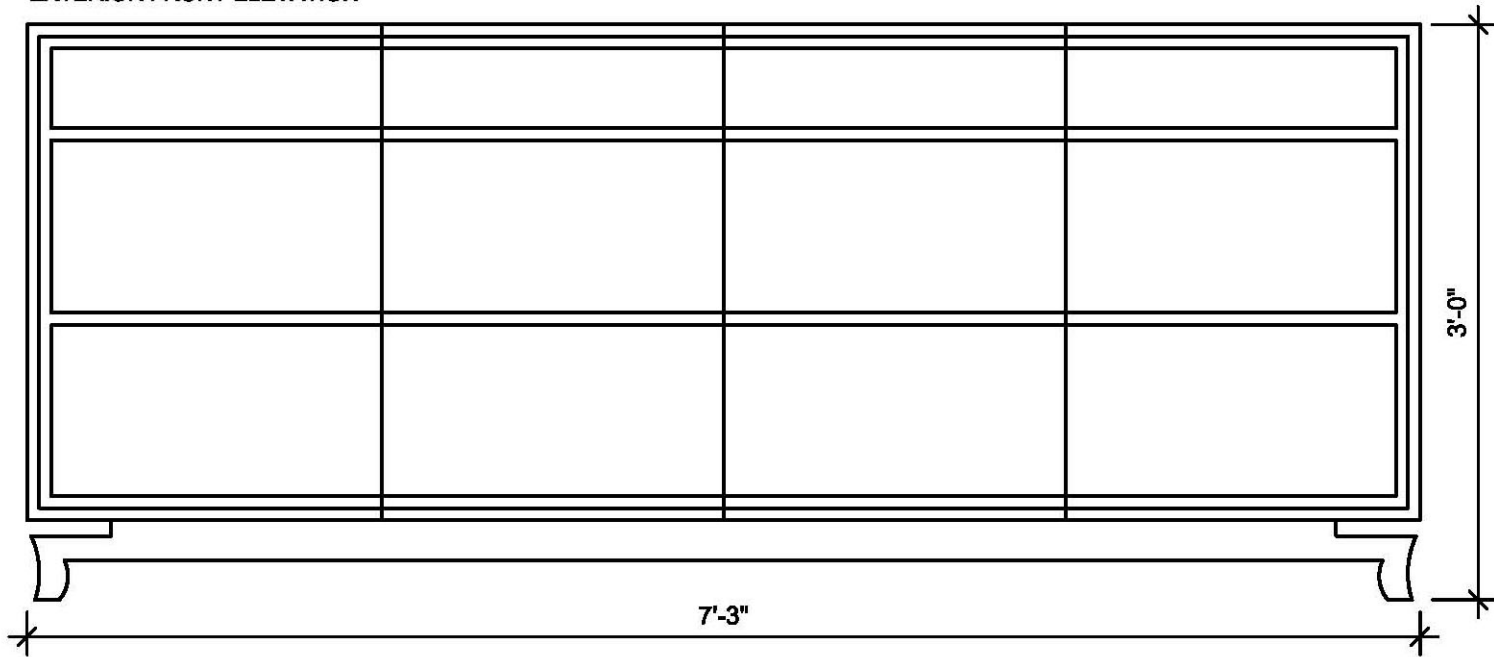
EXTERIOR FRONT ELEVATION



**2** AV CABINET FRONT EXTERIOR ELEVATION SKETCH VERSION 2  
SCALE 1" = 1'-0"

# Preliminary Sketch - Exterior

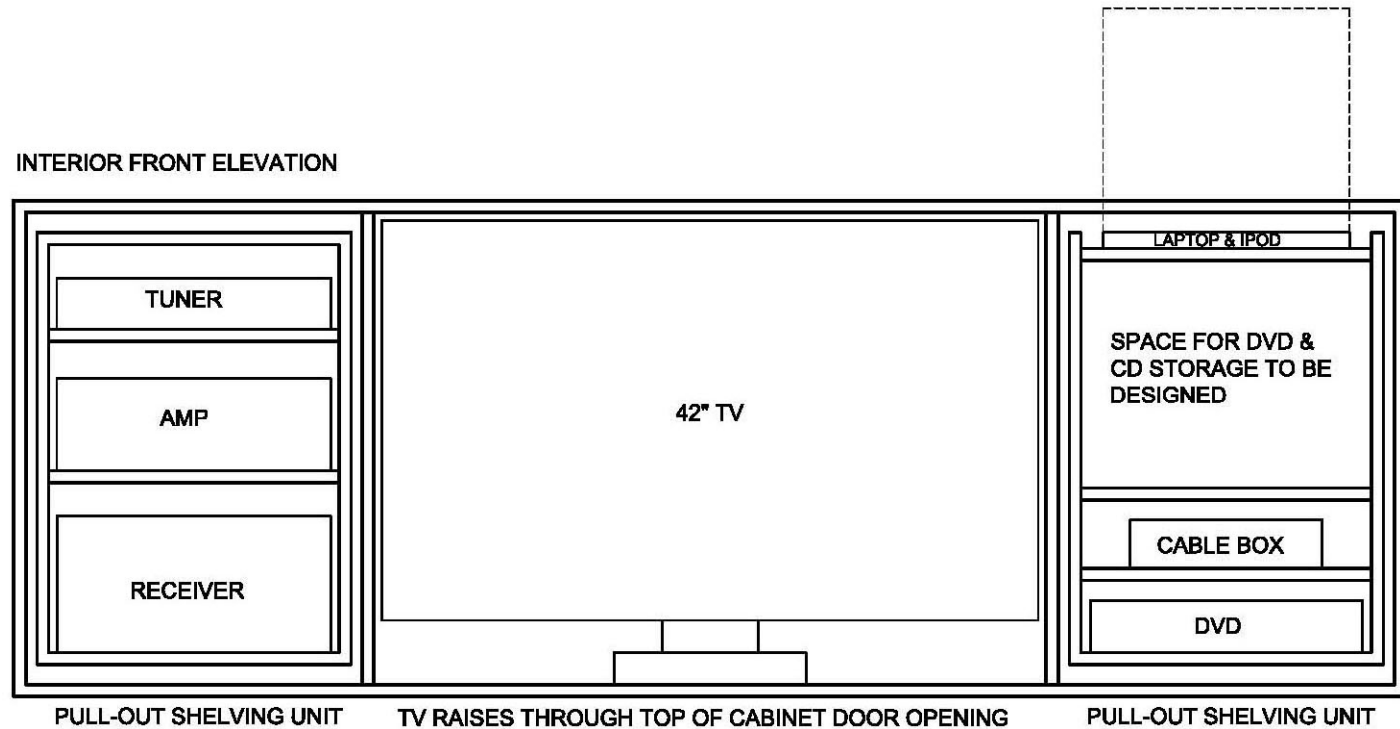
EXTERIOR FRONT ELEVATION



**3** AV CABINET FRONT EXTERIOR ELEVATION SKETCH VERSION 3  
SCALE 1" = 1'-0"

# Preliminary Sketch - Interior

INTERIOR FRONT ELEVATION



SUBWFR

NOTES:

SUBWOOFER TO BE PUT IN A CLOSET & NOT IN AV CABINET

WIRELESS SPEAKERS WILL ALSO BE HOUSED OUTSIDE OF AV CABINET, ELSEWHERE IN LIVING ENVIRONMENT

AV CABINET FRONT INTERIOR ELEVATION WITH TV & OTHER AV EQUIPMENT STORED WITHIN CABINET - SKETCH

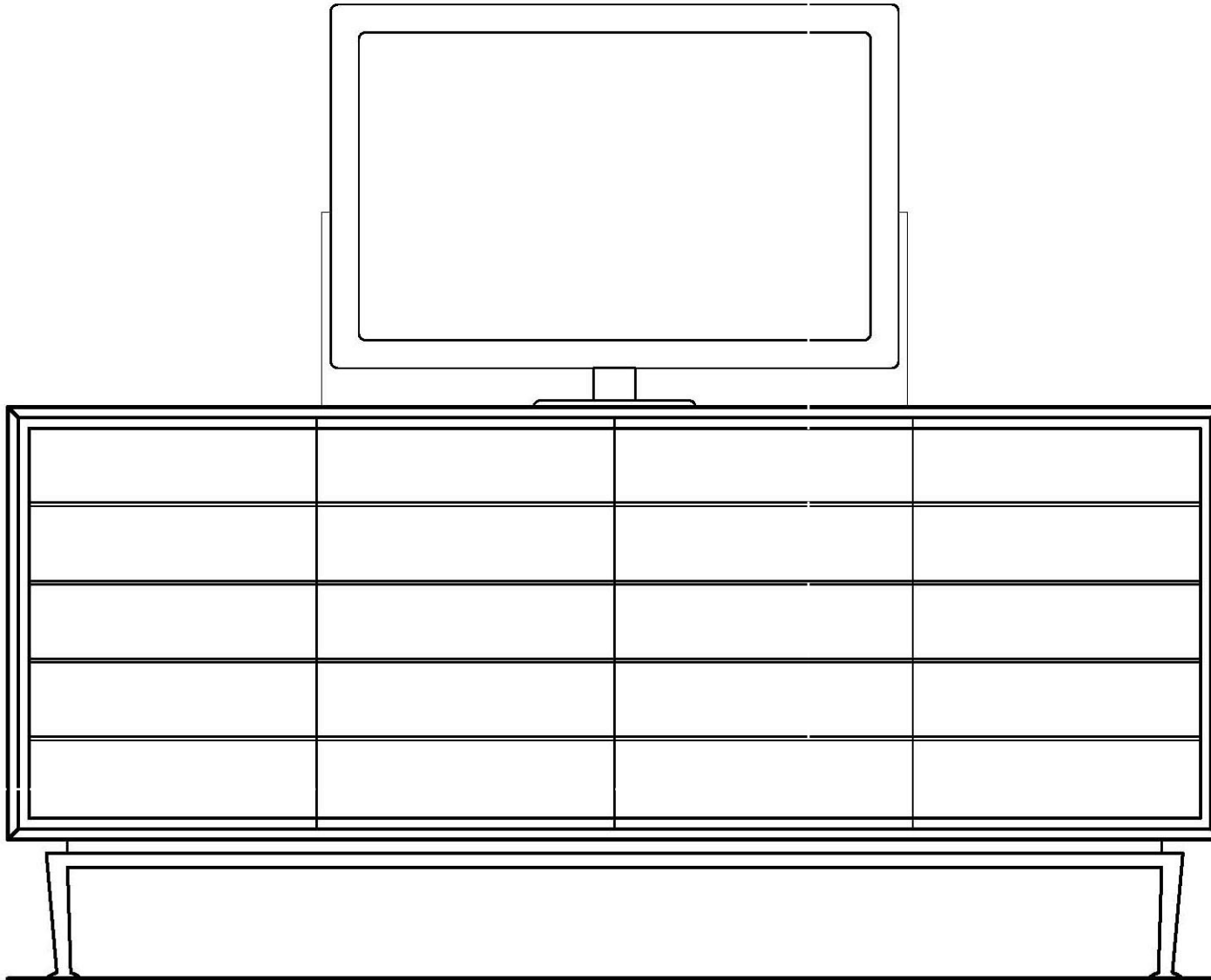
4

SCALE 1" = 1'-0"



# **ELEVATIONS & SECTIONS**

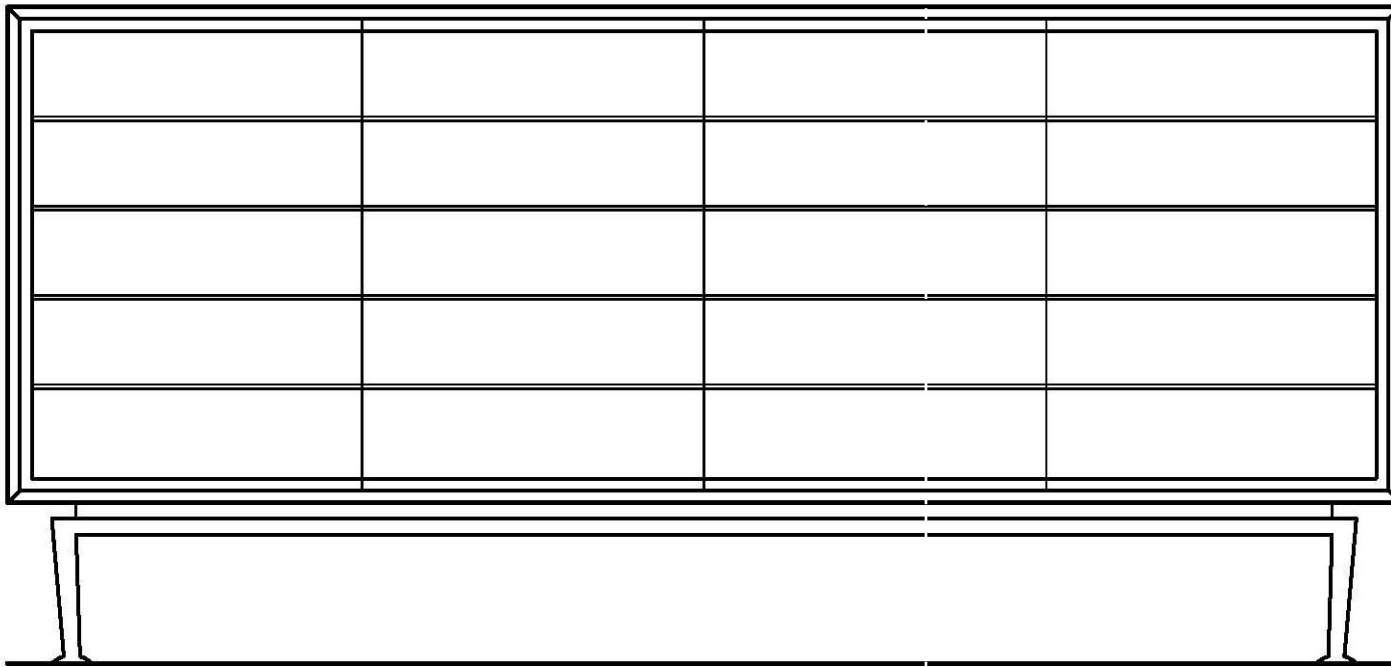
# Exterior Front Elevation



- TV Lifted Through Top Access Panel
- Dimensions:
  - 7'3" W x 3'5" H
- Materials:
  - Front Doors –  $\frac{3}{4}$ " Solid Hardwood in Lyptus or Ash
  - Base, Legs & Door Reveals – Brushed Aluminum
- Scale: 1" ='-0"

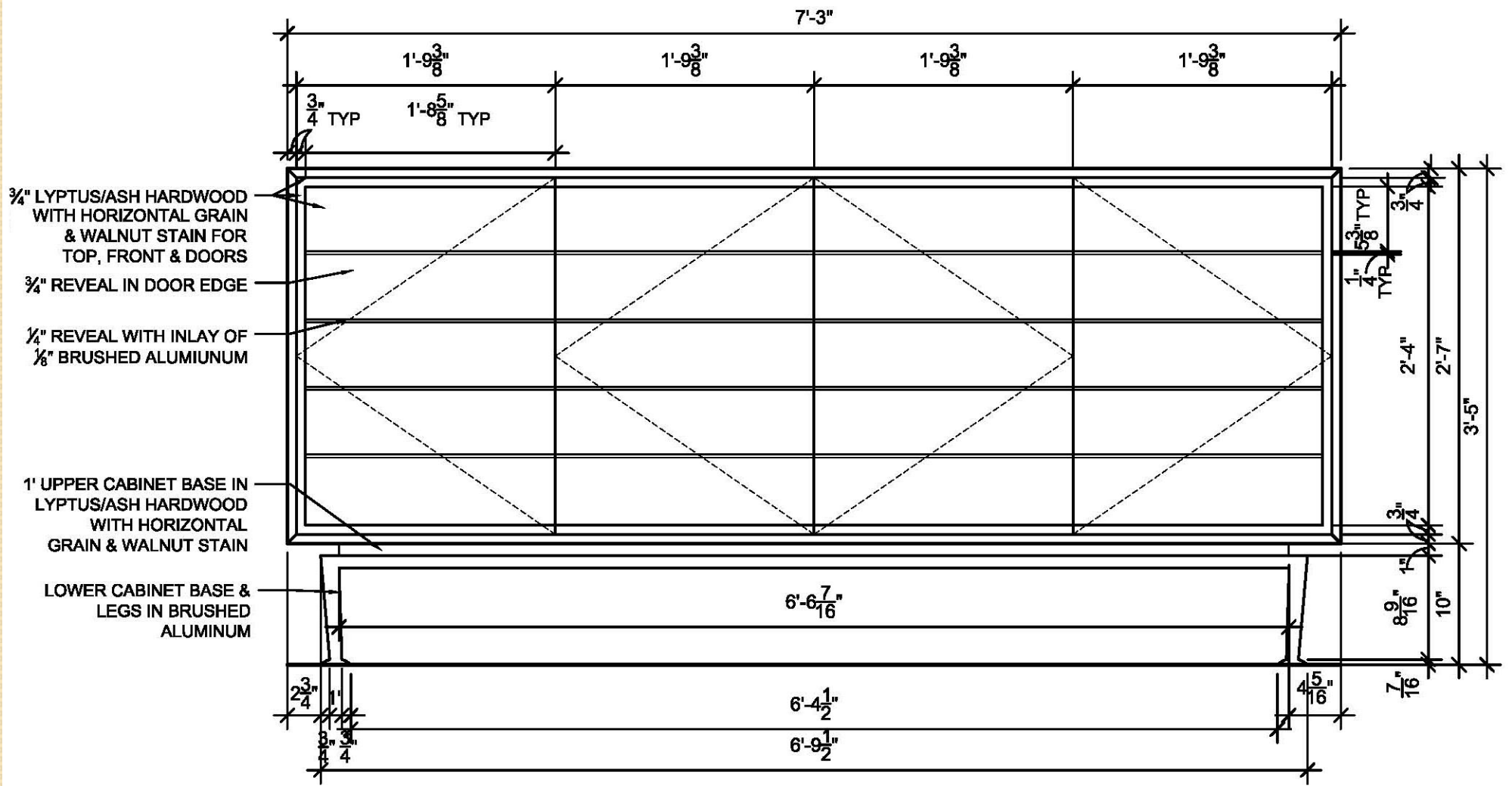


# Exterior Front Elevation



- TV Stored in Cabinet
- Dimensions:
  - 7'3" W x 3'5" H
- Materials:
  - Front Doors –  $\frac{3}{4}$ " Solid Hardwood in Lyptus or Ash
  - Base, Legs & Door Reveals – Brushed Aluminum
- Scale: 1" = 1'-0"

# Exterior Front Elevation with Dimensions

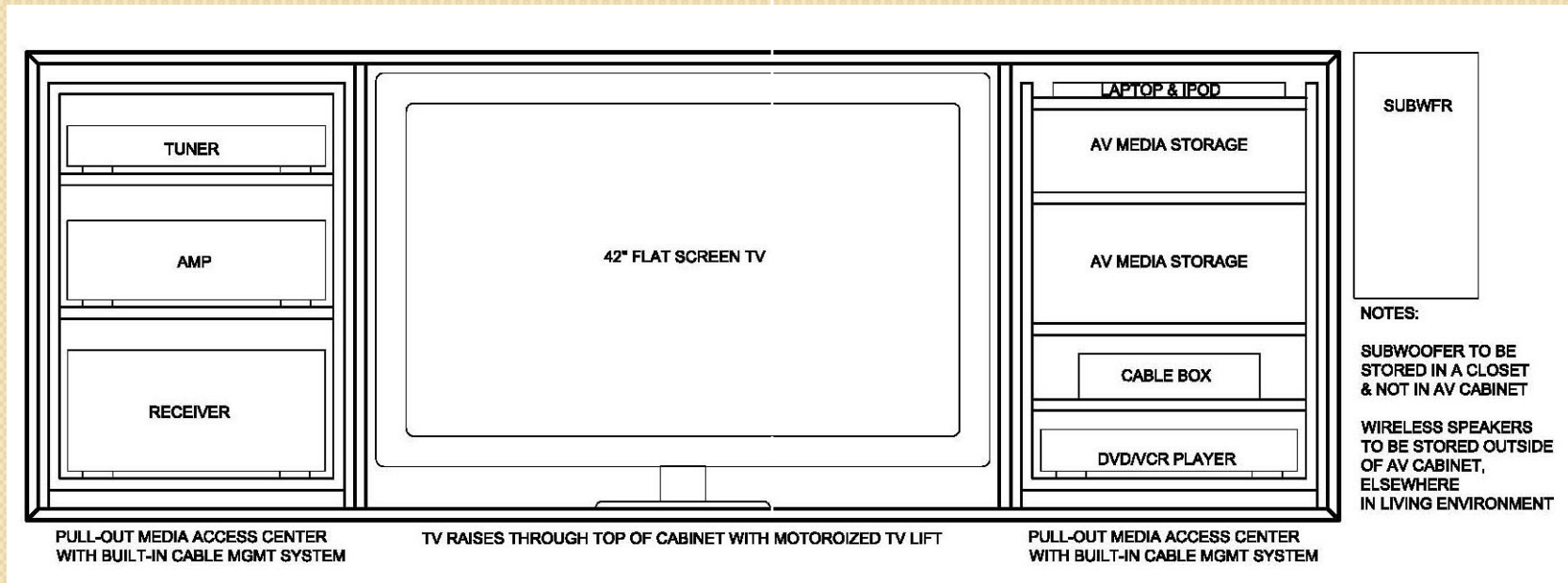


Mig & Tig  
Mortise & Tenon

New Life Furniture  
Design Competition

Julie Logan  
Harrington College of Design

# Interior Front Elevation with TV Stored



- **Maximum Equipment Dimensions**

- TV: 42"
- Components: 18 1/8" W x 18 1/2" D

- **Materials:**

- 1/8" Hardwood veneers (Lyptus or Ash) & 1/2" formaldehyde-free MDF for interior walls and component centers
- TV Lift in matt aluminum with plastic

- **Scale: 1" = '0"**

# Planned Equipment & Dimensions

*At Mid-Point:*

	<u>Width</u>	<u>Height</u>	<u>Depth</u>
• 42" TV	40.7"	28.4"	12.1"
• Receiver	<u>17.1"</u>	8.3"	<u>18.4"</u>
• CD/DVD/VCR	17.0"	3.3"	10.3"
• Amplifier	17.0"	5.6"	14.3"
• Tuner	<u>17.1"</u>	3.0"	10.6"
• Laptop/iPod	14.3"	1.3"	10.4"

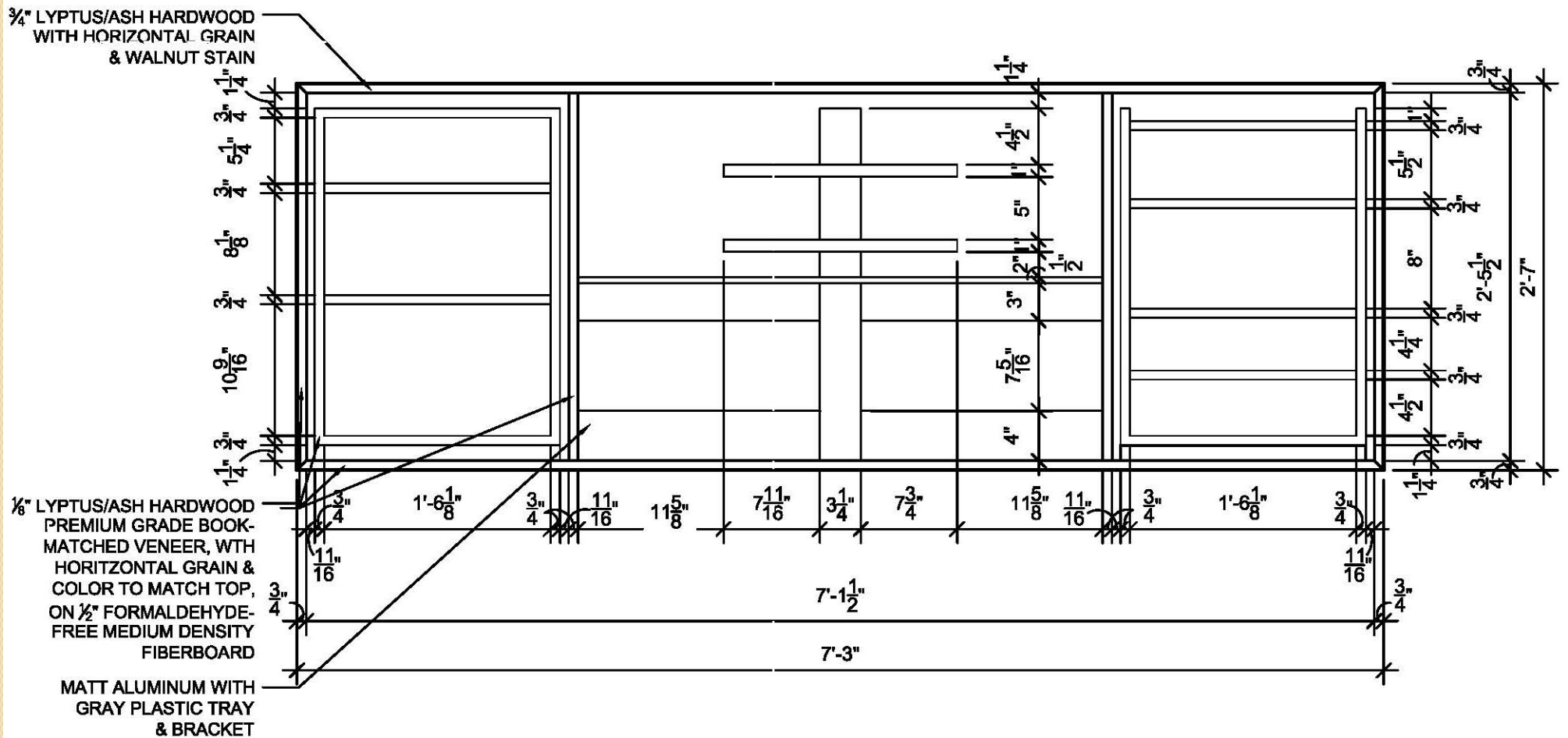
- Brands Reviewed:

- Sony, LG, Toshiba, Pioneer, Denon, Yamaha, Bose, Def Tech, Panasonic, Polkaudio, Sonance, Onkyo, Apple, Dell

- Assumptions:

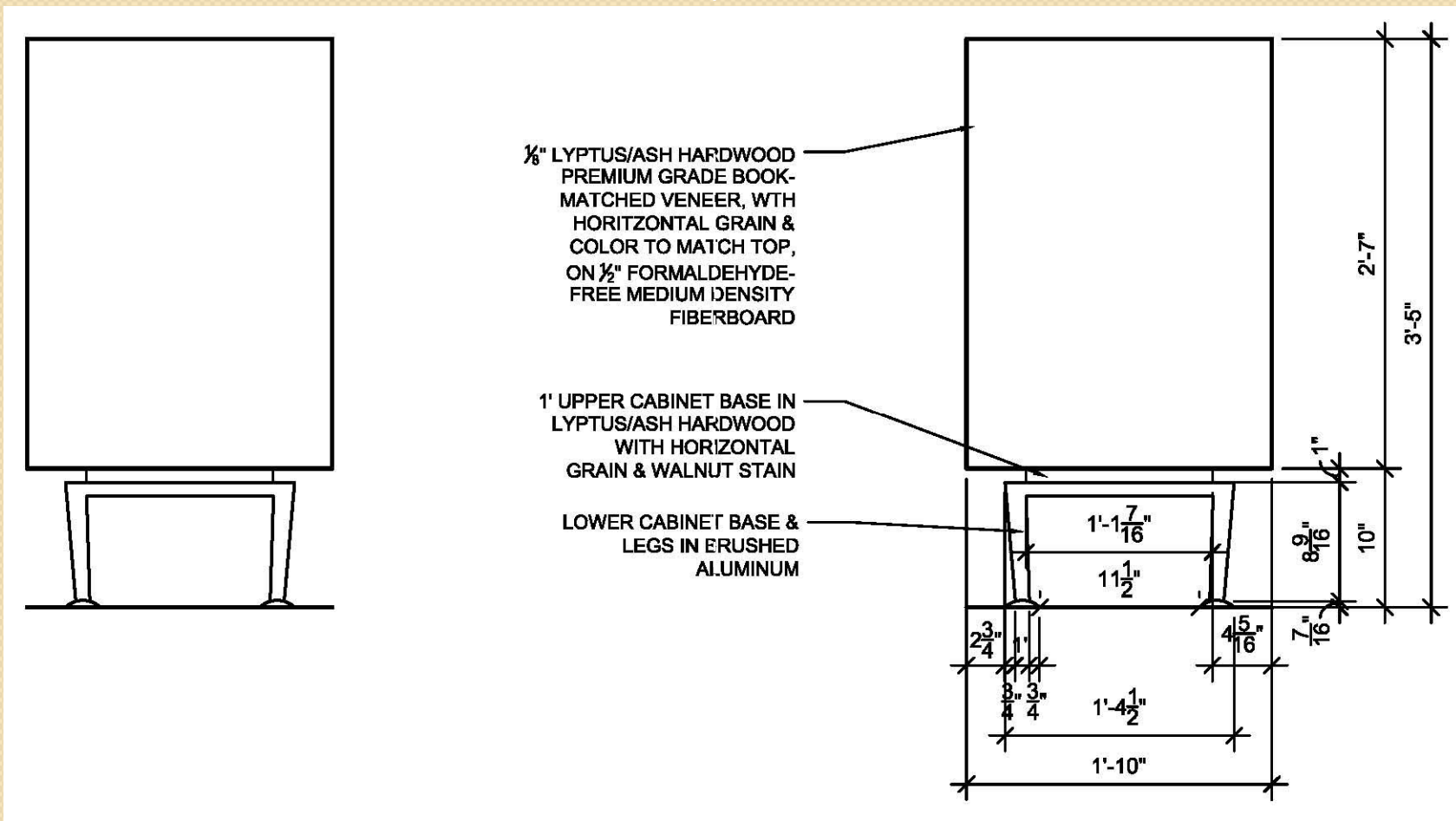
- Dimensions at midpoint; \$9700 Budget at average
- Wireless speaker system with subwoofer housed in closet

# Interior Front Elevation with Dimensions



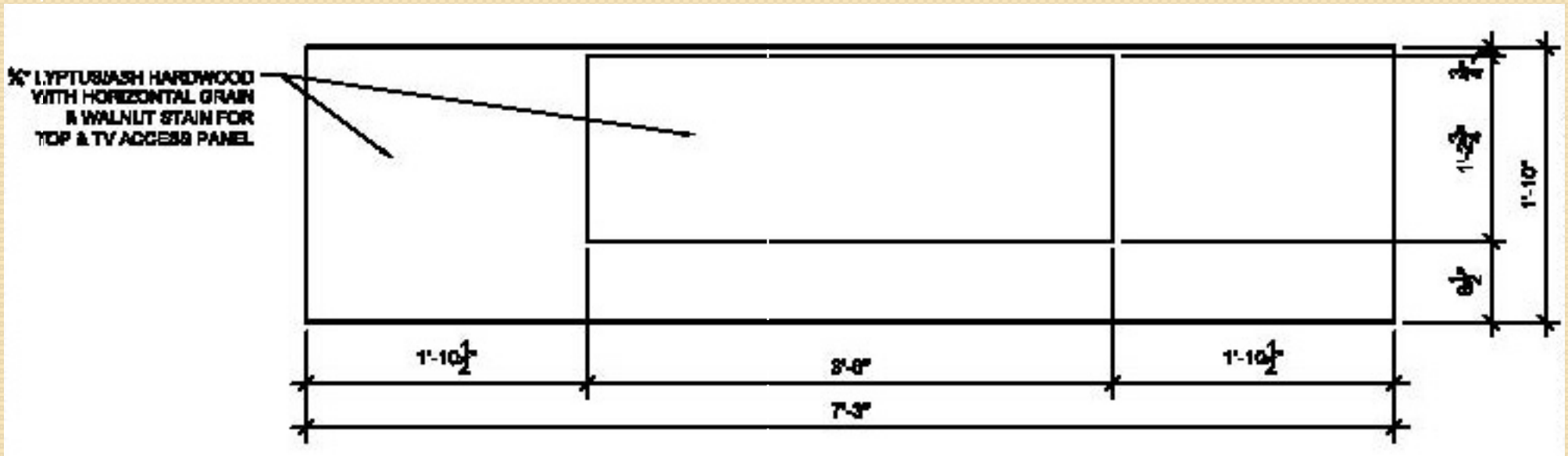
- Maximum Equipment Dimensions
  - TV: 42"
  - Components: 18 1/8" W x 18 1/2" D
- Materials:
  - 1/8" Hardwood veneers (Lyptus or Ash) & 1/2" formaldehyde-free MDF for interior walls and component centers
  - TV Lift in matt aluminum with plastic
- Scale: 1" = 1'-0"

# Exterior Side Elevation with Dimensions



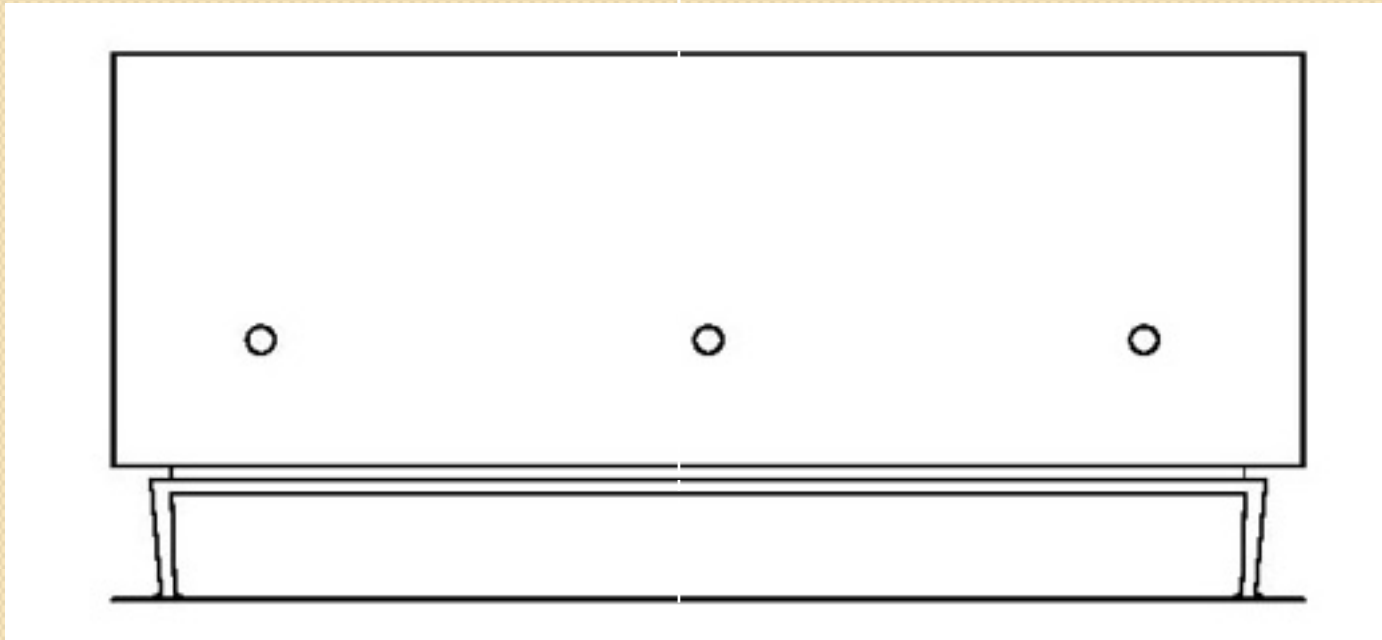
- Dimensions: 1'10" D x 3'5" H
- Materials:
  - 1/8" Hardwood veneers (Lyptus or Ash) & 1/2" formaldehyde-free MDF for cabinet sides
  - Brushed aluminum for base & legs
- Scale: 1" = 1'-0"

# Exterior Top View with Dimensions



- Dimensions: 7'3" W x 1'10" D
- Materials:
  - 3/4" Solid hardwood (Lyptus or Ash) for top & TV access panel
- Scale: 1" = 1'-0"

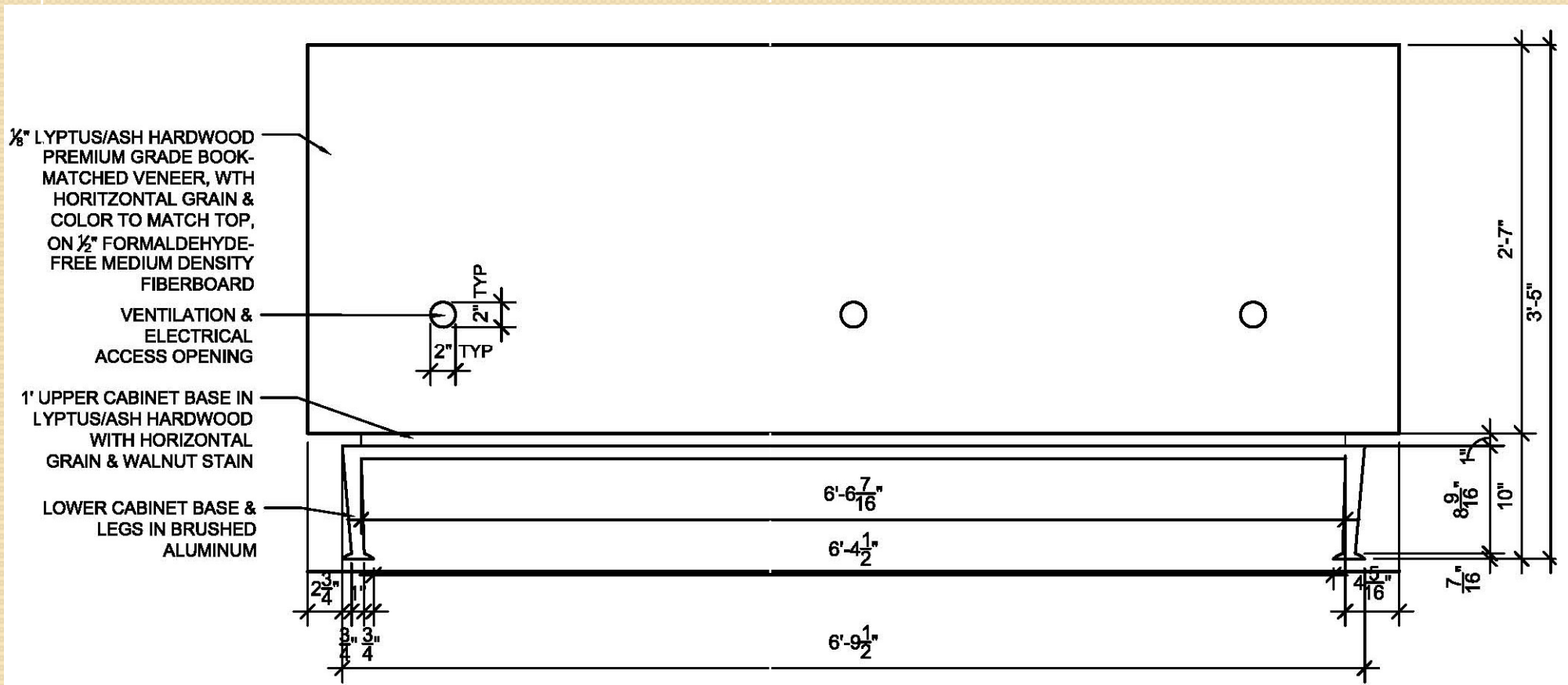
# *Exterior Back Elevation*



- Dimensions: 7'3" W x 3'5" H
- 3 Ventilation & Utility Access Holes: 2" Diameter
- Materials:
  - 1/8" Hardwood veneers (Lyptus or Ash) & 1/2" formaldehyde-free MDF for cabinet back
  - Brushed aluminum for base & legs

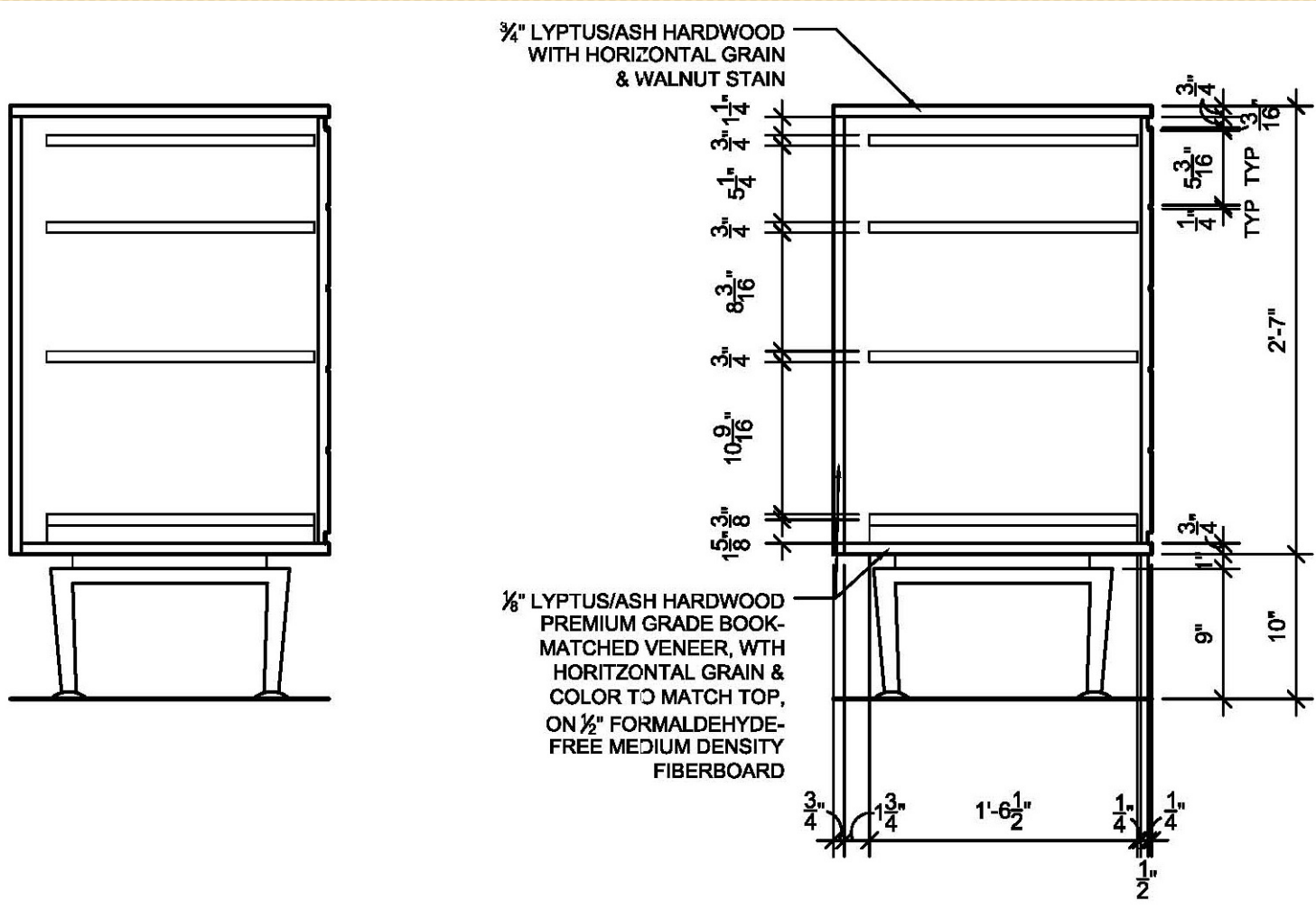


# Exterior Back Elevation with Dimensions



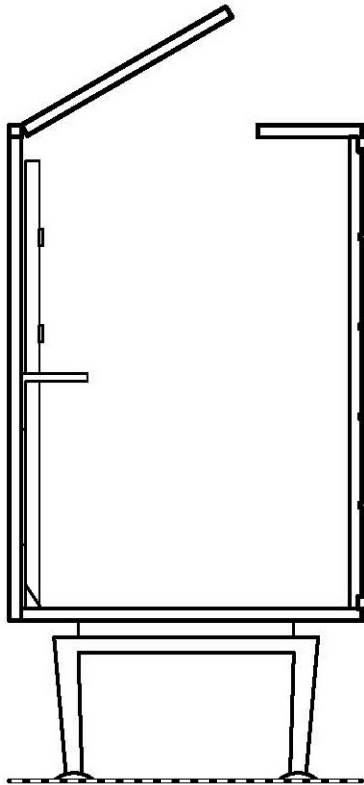
- Dimensions: 7'3" W x 3'5" H
- Materials:
  - 1/8" Hardwood veneers (Lyptus or Ash) & 1/2" formaldehyde-free MDF for cabinet back
  - Brushed aluminum for base & legs
- Scale: 1" = 1'-0"

# Interior Side Section – Left Media Center

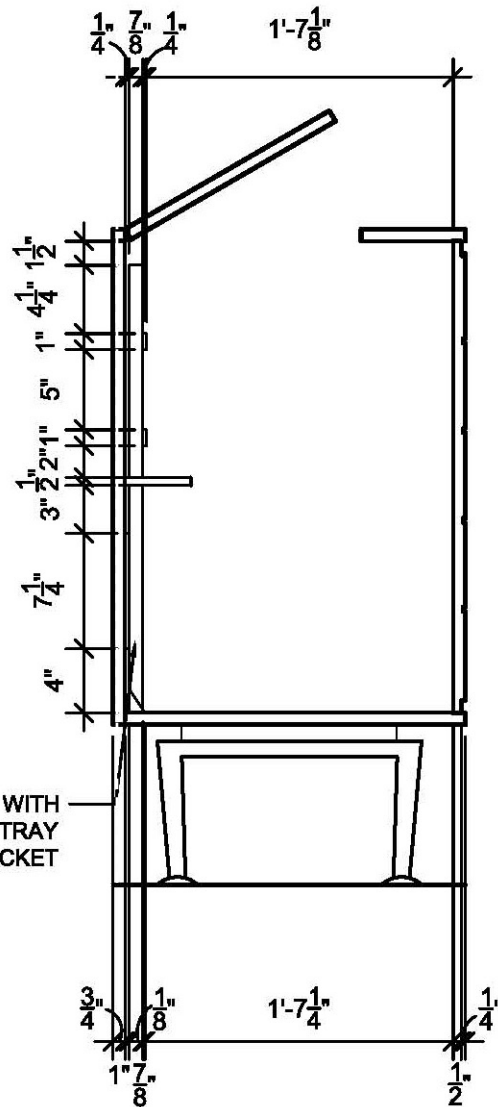


- Dimensions: 1'10" D x 3'5" H
- Materials:
  - 1/8" Hardwood veneers (Lyptus or Ash) & 1/2" formaldehyde-free MDF for interior media center
- Scale: 1" = 1'-0"

# Interior Side Section – TV Lift Center

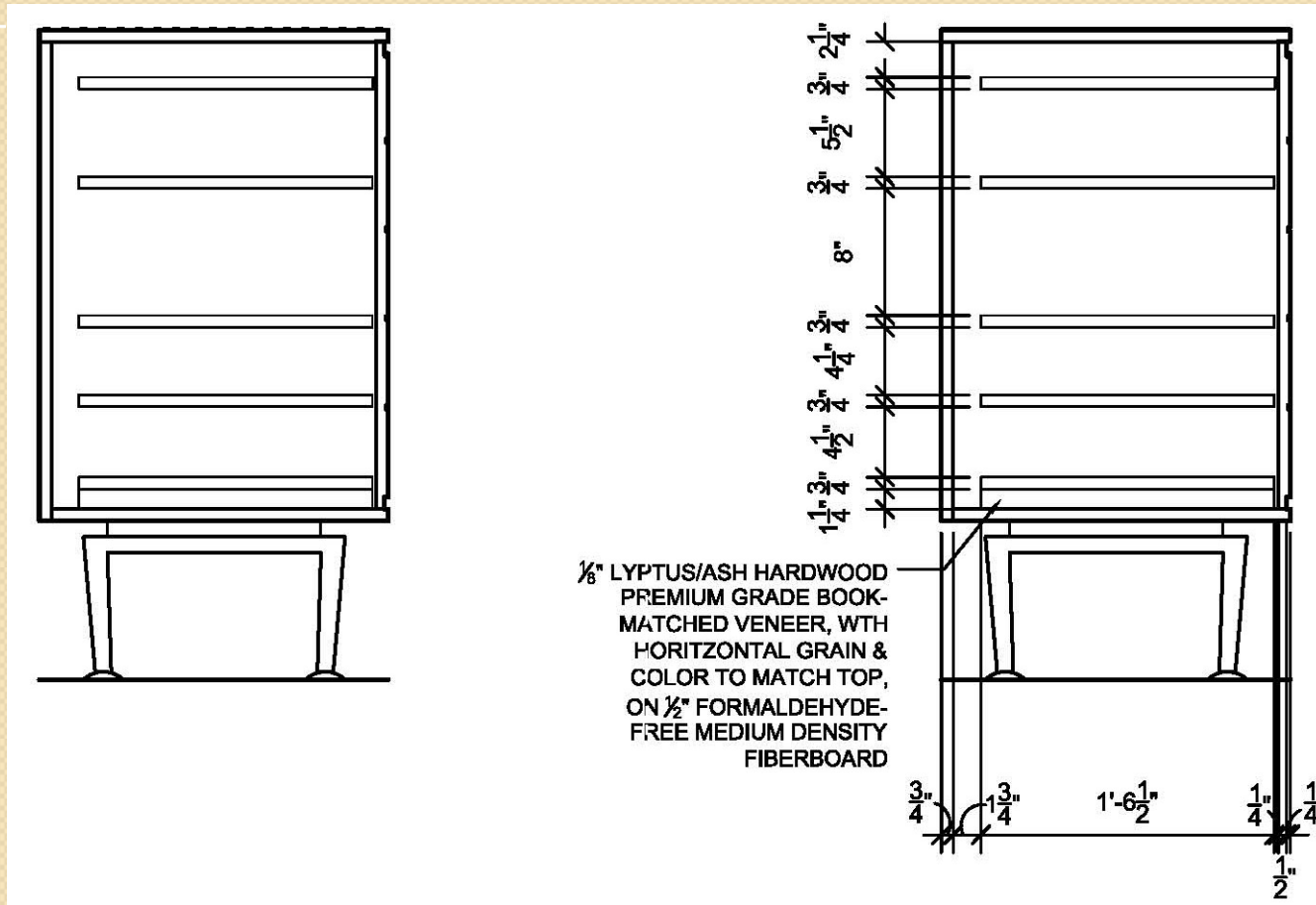


MATT ALUMINUM WITH  
GRAY PLASTIC TRAY  
& BRACKET



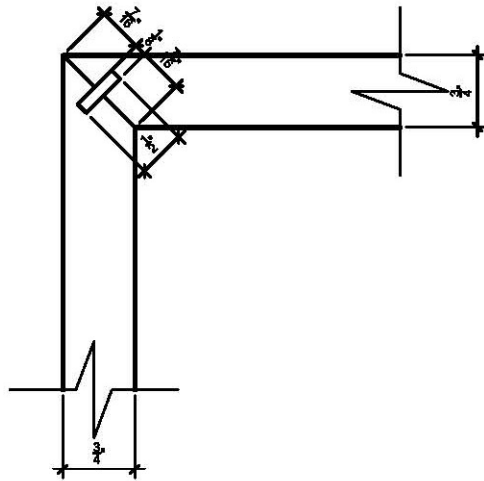
- Dimensions:  
1'10" D x 3'5" H
- Materials:
  - TV Lift in matt aluminum with plastic
- Scale: 1"=1"-0"

# Interior Side Section-Right Media Center



- Dimensions: 1'10" D x 3'5" H
- Materials:
  - 1/8" Hardwood veneers (Lyptus or Ash) & 1/2" formaldehyde-free MDF for interior media center
- Scale: 1" = 1'-0"

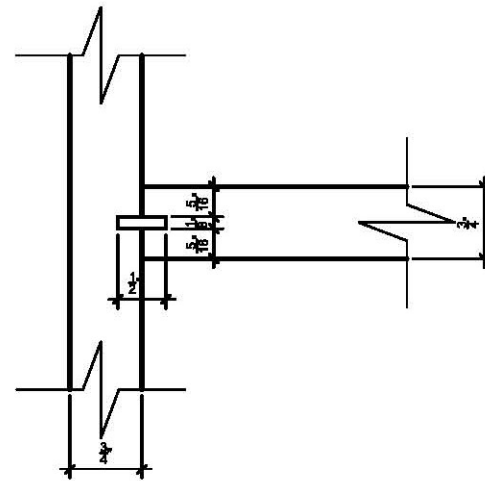
# Interior Joint Sections



AV CABINET JOINT SECTION  
SPLINED MITER  
TOP TO SIDE, TOP TO BACK,  
BOTTOM TO SIDE & BOTTOM TO BACK

1

SCALE: 6" = 1'-0"



AV CABINET JOINT SECTION  
LOOSE TONGUE JOINT  
CABINET TOP TO INTERIOR DIVIDER  
WALLS, CABINET BOTTOM TO  
INTERIOR DIVIDER WALLS & MEDIA  
ACCESS CENTER SHELVES TO MEDIA  
ACCESS CENTER SIDE WALLS

2

SCALE 6" = 1'-0"



# MATERIALS

# Materials

- Lyptus (Top, Doors – Option 1)
  - Fully sustainable & renewable hardwood lumber from Eucalyptus trees
    - 14-16 year harvest
    - 11 times more productive & 30 times the volume vs. temperate forest
  - Comparable to hardwood maple in density, strength & technical properties
  - Comparable to cherry & mahogany in appearance & accepts all common types of finishing
- Ashwood (Top, Doors – Option 2)
  - Excellent use of wood damaged by emerald ash borer
  - Strong hardwood with elasticity, accepting all common types of finishing
  - Comparable to oak & cherry in density, strength, technical properties & appearance
- Veneers (Sides, Back, Interior)
  - Sandwiching MDF, creating panels with solid hardwood appearance & properties
- Formaldehyde-free medium density fiberboard
  - Sides, Back, Interior
  - Sandwiched between wood veneers, creating panels with solid wood appearance & properties
  - Waste wood fiber, a by-product of wood processing & lumber milling operations
  - Excellent flatness & dimensional stability
  - Saves on use of solid timber & greatly reduces formaldehyde out-gassing
- Aluminum (Base, legs, reveals)
  - World's most plentiful & versatile metal, which is easily fabricated
  - Light-weight, but strong & corrosion-resistant

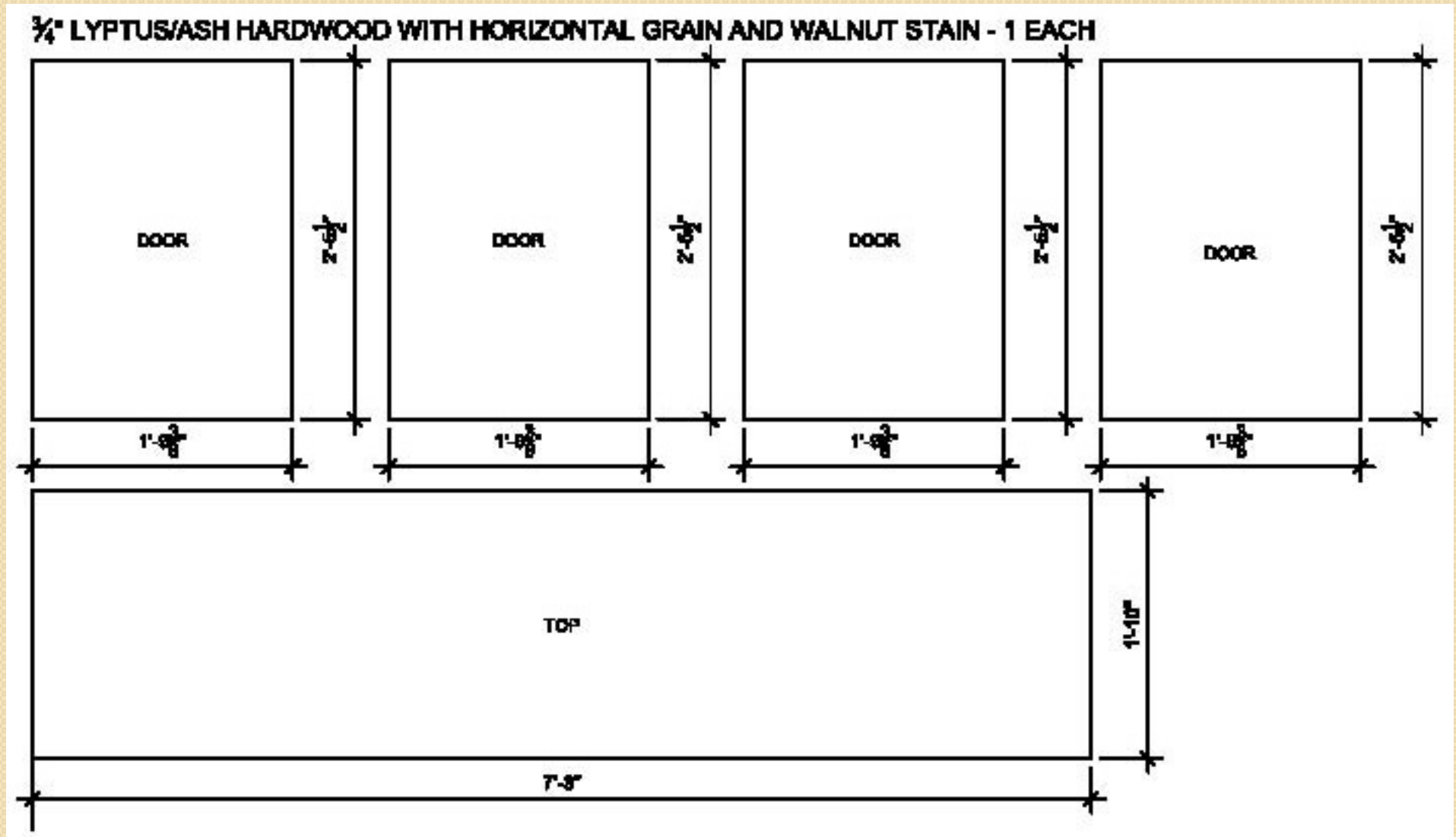


# CUT SHEETS



# Cut Sheet

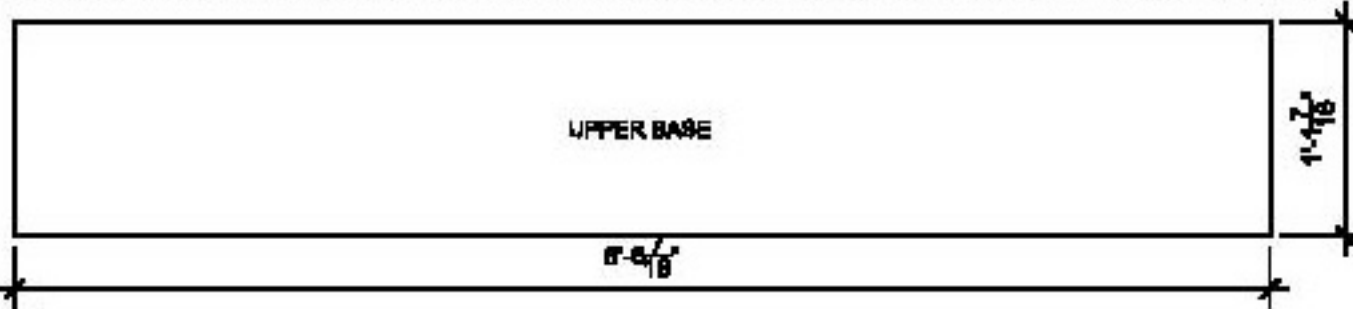
## Exterior Wood/Veneer/MDF Page 1 of 3



# Cut Sheet

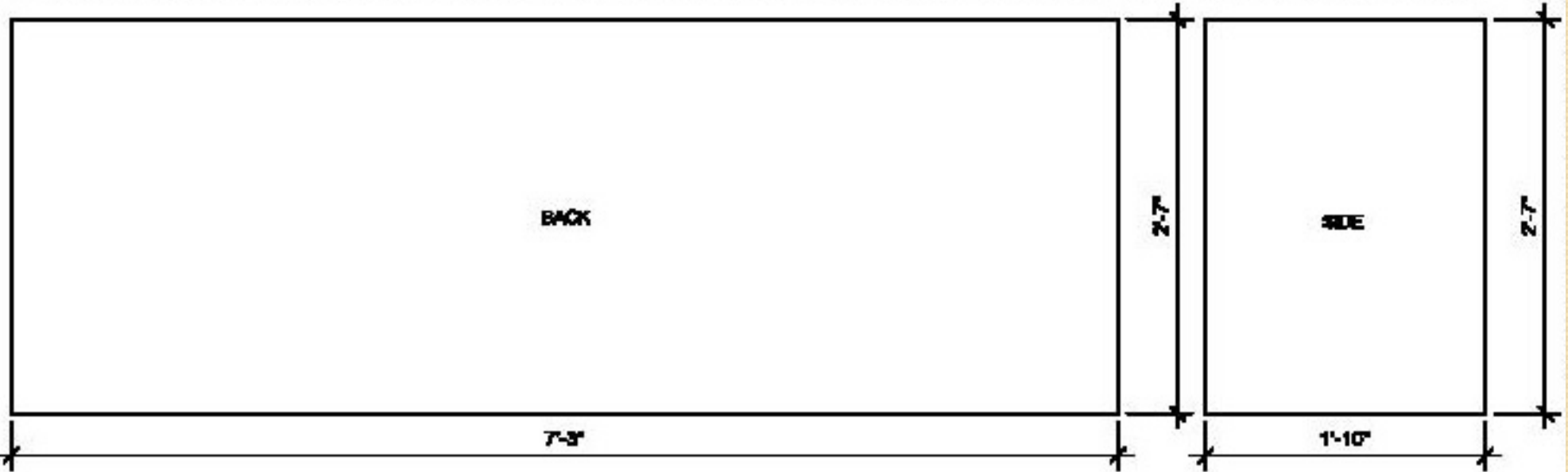
## Exterior Wood/Veneer/MDF Page 2 of 3

1" LYPTUS/ASH HARDWOOD WITH HORIZONTAL GRAIN AND WALNUT STAIN - 1 EACH



1/2" FORMALDEHYDE-FREE MEDIUM DENSITY FIBERBOARD - 1 EACH

3/8" PREMIUM GRADE BOOK-MATCHED LYPTUS/ASH VENEER WITH HORIZONTAL GRAIN & WALNUT STAIN - 2 EACH

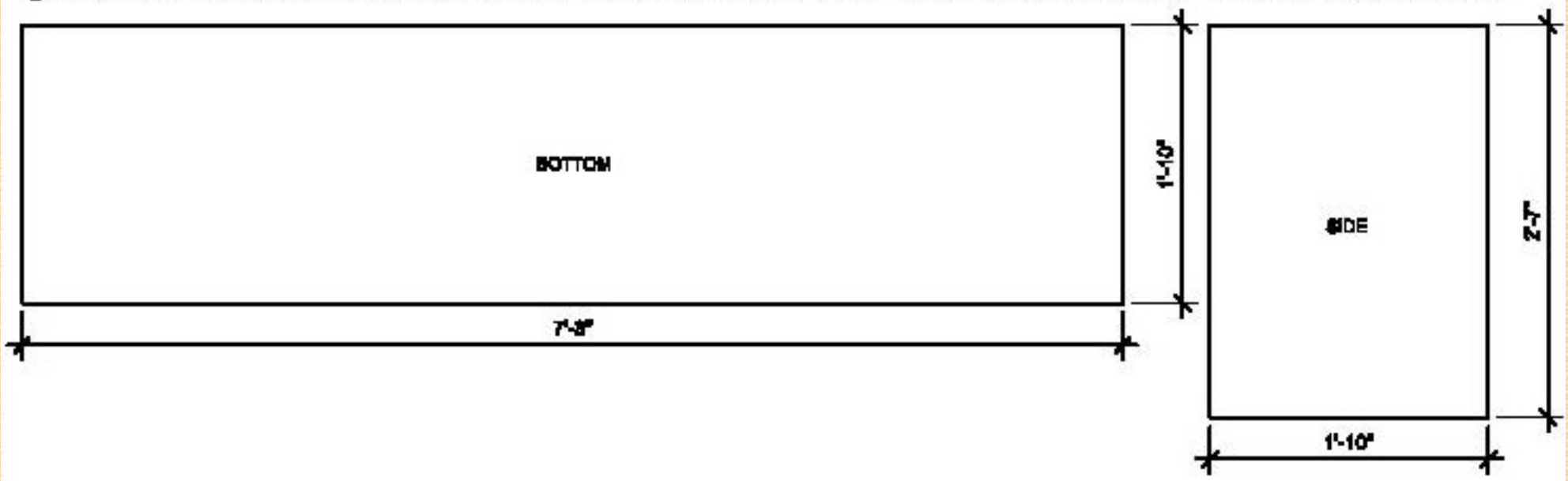


# Cut Sheet

## Exterior Wood/Veneer/MDF Page 3 of 3

$\frac{1}{2}$ " FORMALDEHYDE-FREE MEDIUM DENSITY FIBERBOARD - 1 EACH

$\frac{1}{8}$ " PREMIUM GRADE BOOK-MATCHED LYPTUS/ASH VENEER WITH HORIZONTAL GRAIN & WALNUT STAIN - 2 EACH

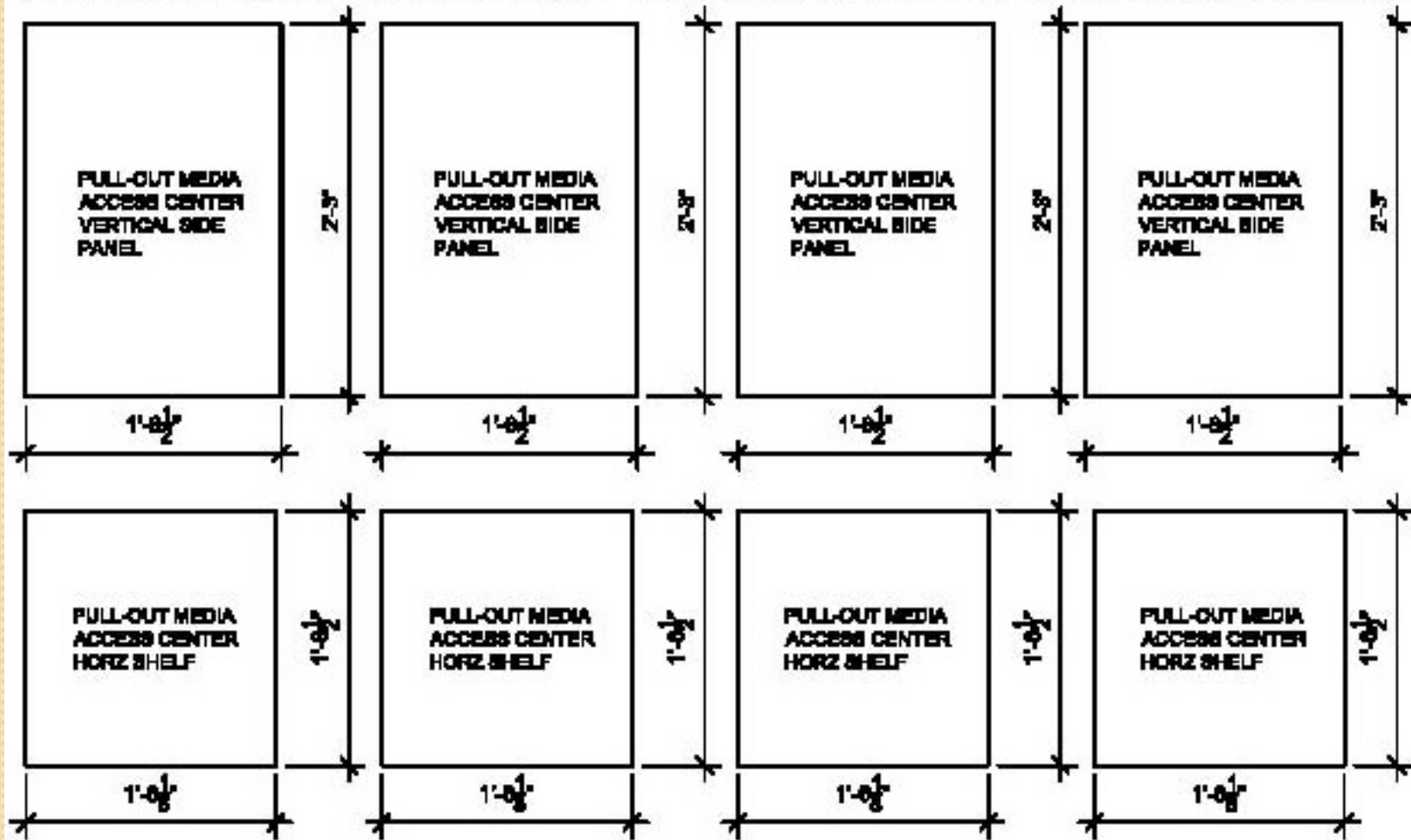


# Cut Sheet

## Interior Wood/Veneer/MDF Page 1 of 2

$\frac{1}{2}$ " FORMALDEHYDE-FREE MEDIUM DENSITY FIBERBOARD - 1 EACH

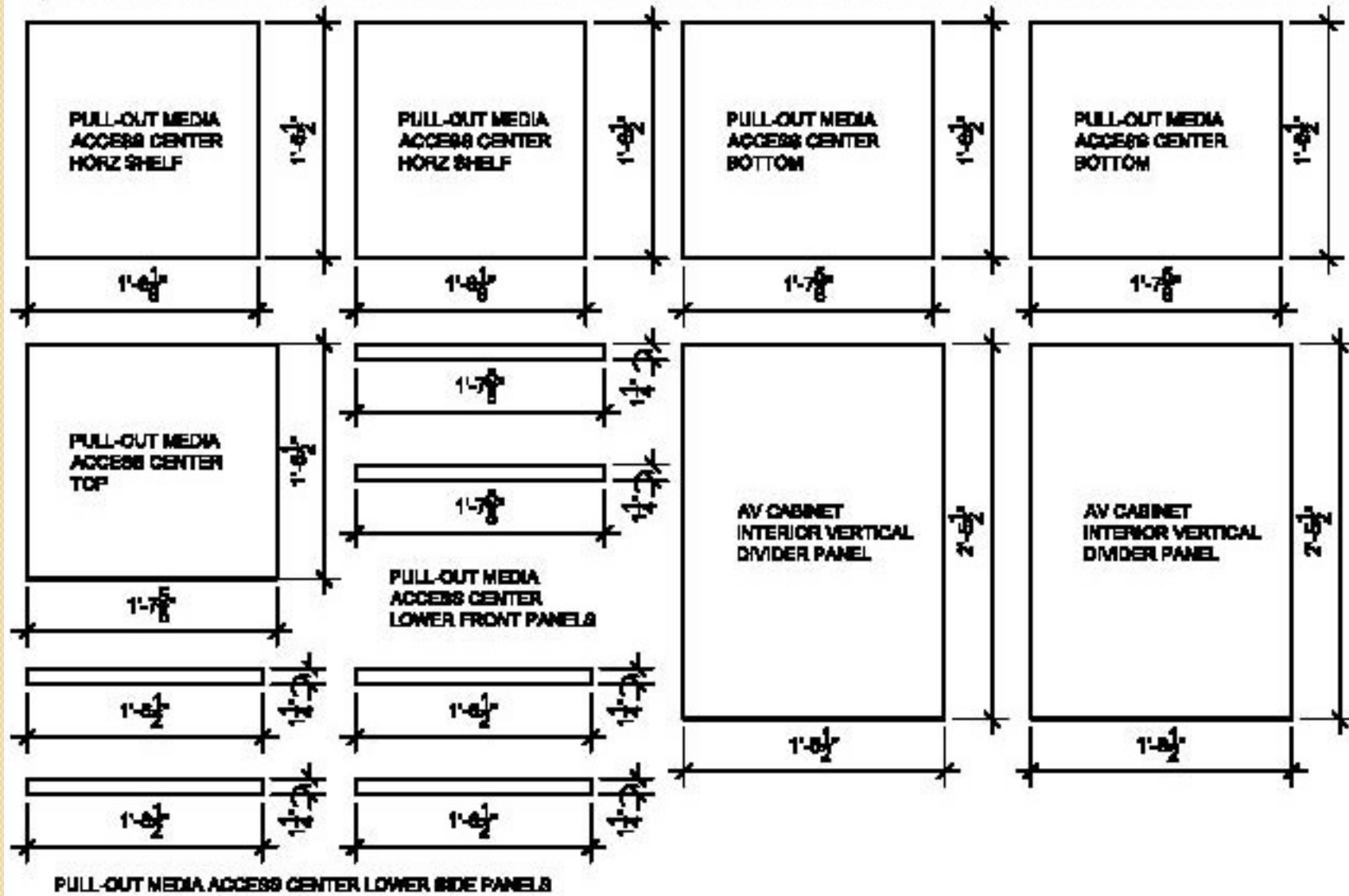
$\frac{1}{8}$ " PREMIUM GRADE BOOK-MATCHED LYPTUS/ASH VENEER WITH HORIZ GRAIN & WALNUT STAIN - 2 EACH



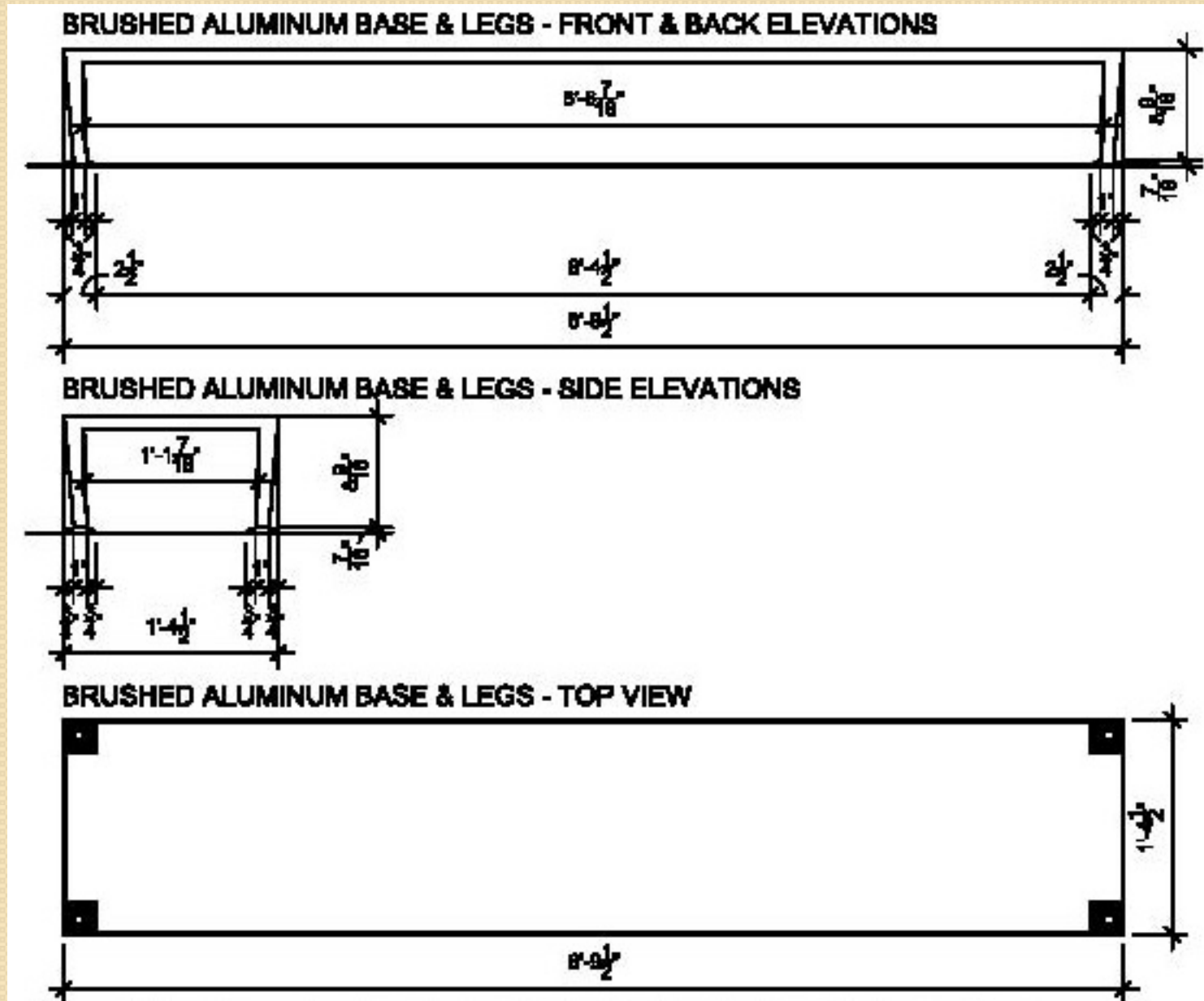
# Cut Sheet

## Interior Wood/Veneer/MDF Page 2 of 2

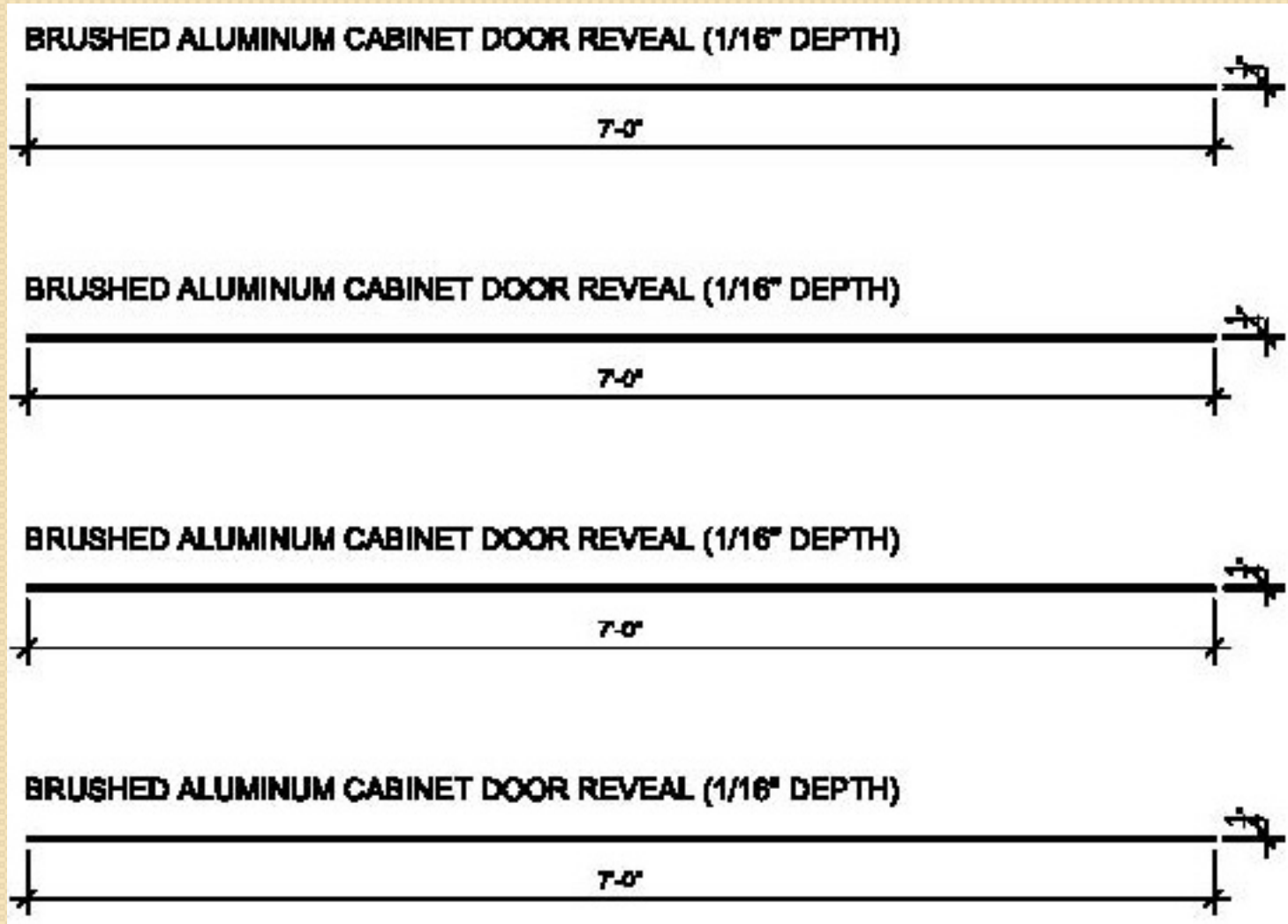
$\frac{1}{8}$ " FORMALDEHYDE-FREE MEDIUM DENSITY FIBERBOARD - 1 EACH  
 $\frac{1}{8}$ " PREMIUM GRADE BOOK-MATCHED LYPTUS/ASH VENEER WITH HORIZ GRAIN & WALNUT STAIN - 2 EACH



# Cut Sheet - Aluminum Page 1 of 2

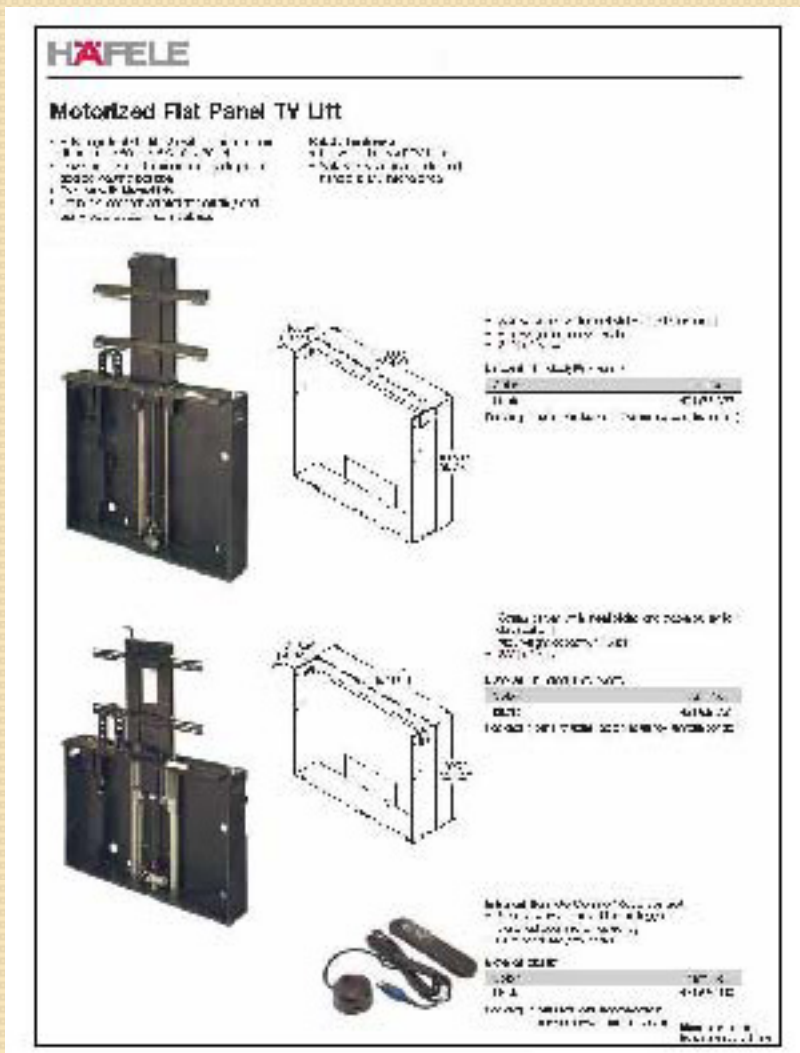


# Cut Sheet - Aluminum Page 2 of 2



# Cut Sheet

## TV Lift and Media Center

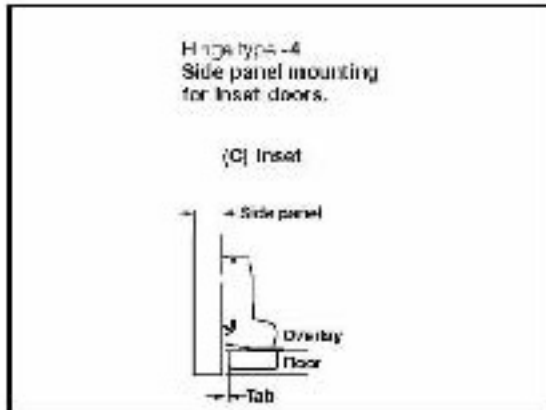


HAFELE'S STANDARD MOTORIZED FLAT PANEL TV LIFT IS USED IN THE NOUVELLE VIE DESIGN, AS MANUFACTURED, WITHOUT CUSTOMIZATION.

HAFELE WILL CUSTOM-FIT A MEDIA ACCESS CENTER TO USED IN THE NOUVELLE VIE DESIGN, THIS MODEL IS SHOWN AS AN EXAMPLE.



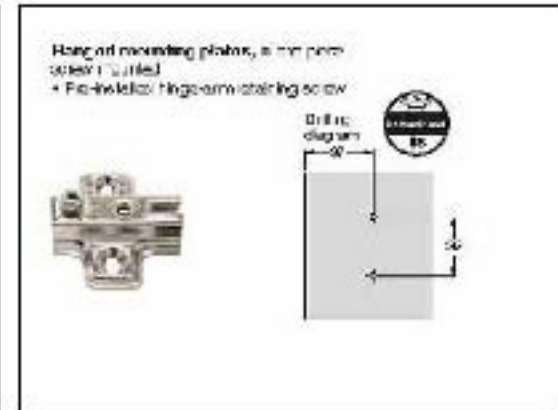
# Cut Sheet Hardware



**HAFELE  
CONCEALED HINGE  
A-SERIES**



**HAFELE  
CONCEALED HINGE  
A-SERIES TYPE -6  
OPENING RANGE 165 DEGREE  
FOR INSET  $\frac{3}{8}$  DOOR  
2 PER DOOR (8 TOTAL)**



**HAFELE  
FLANGED MOUNTING PLATE  
FOR A-SERIES HINGE  
2 PER DOOR (8 TOTAL)**



# DESIGNER

# Designer



Designer: Julie Logan

- I am thrilled to be involved in New Life and look forward to the successful designs which will surely result from such a talented group of designers. I am a Chicago city native and have lived in Chicago all of my life, although I have had the opportunity of extensive travel from my previous profession in finance. Prior to joining Harrington, I had a wonderful and successful 22 year career in the manufacturing sector, with my last position being a Finance Vice President for an office products company. My husband and I currently have two homes, one in downtown Chicago and one in Chicago's northwest suburbs.
- There are so many things that inspire me in design that it is difficult to describe them all. It might be a work of art, a lyric, something from the outside world such as a raindrop, a sunny day or an individual's expression, an established successful design by another designer, a word, a color or a fabric, to name just a few.
- While shopping for product I am most interested in creativity, quality, value, and environmental responsibility. Successful products balance these four attributes to achieve an optimum result. I am least interested in trendiness, quantity and brand, unless the brand represents creativity, quality, value, and environmental responsibility.



# **NOUVELLE VIE**

# *Nouvelle Vie*



- Historically Inspired
- Innovative
- Self-contained
- Eco-Friendly
- Price: \$5,000-\$5,500

Designer: Julie Logan (2008)